



Decorative Panels Book

Pearl Plastics has established itself as suppliers of high quality maintenance free plastic building products.

The vast range on offer by Pearl Plastics consists of nine Rainwater Systems, Soil Waste Systems in Ring Seal and Solvent Weld. Underground Drainage, Sewer Systems, PVC-U Cellular Foam Building Products and Decorative Panels.



www.pearlplastics.co.uk



10mm Panels 2.4m x 1m



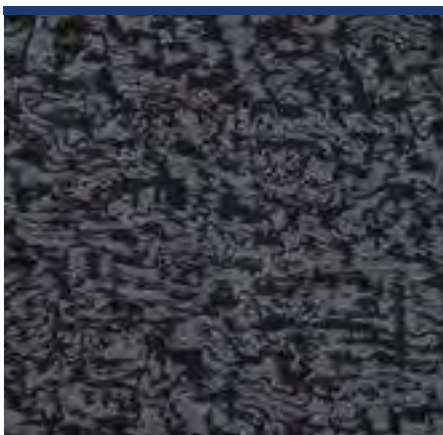
FF10-CONBHG GREY
CONCRETE HIGH GLOSS



FF10-BCP
BEIGE CONCRETE



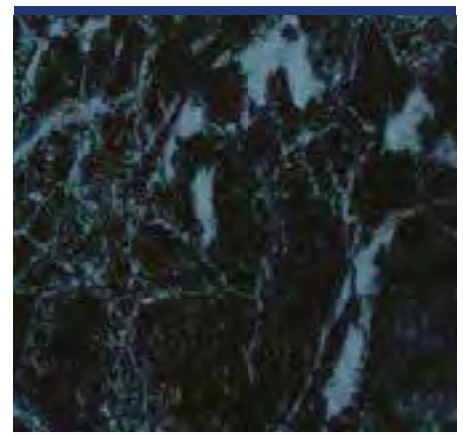
FF10- BESLAT
BEIGE SLATE



FF10-BF
BLACK FROST



FF10-BLMET
BLACK METALLIC GEMSTONE



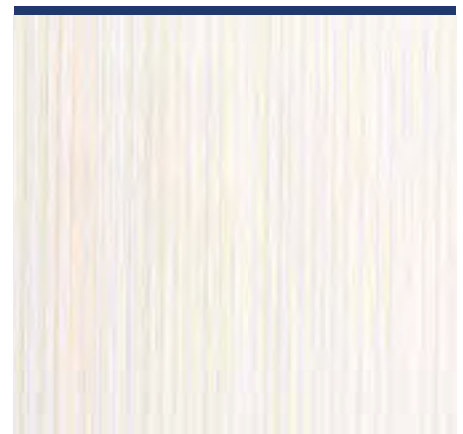
FF10-BM
BLACK MARBLE



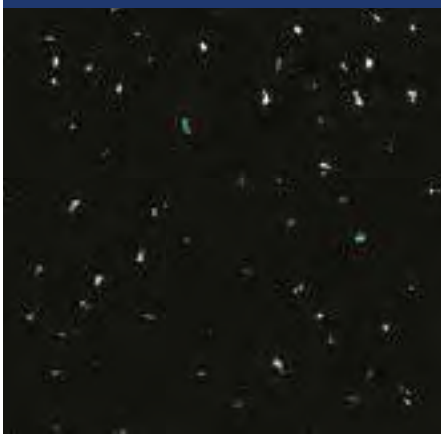
FF10-BRD
BLACK RAINBOW DROP



FF10-BRG
BRUSHED GREY



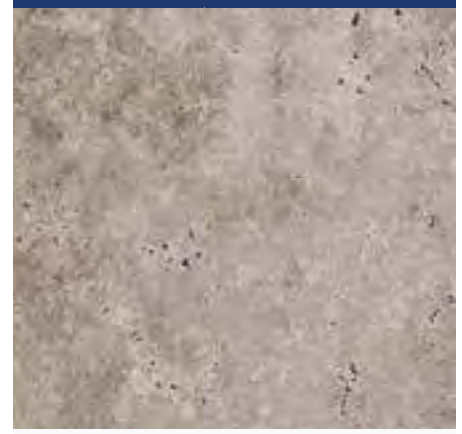
FF10-BRW
BRUSHED WHITE



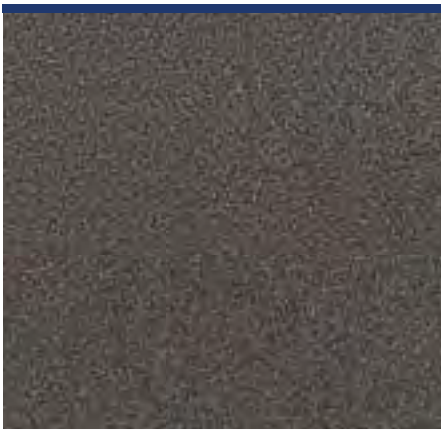
FF10-BS
BLACK SPARKLE



FF10-BSLAT
BLACK SLATE



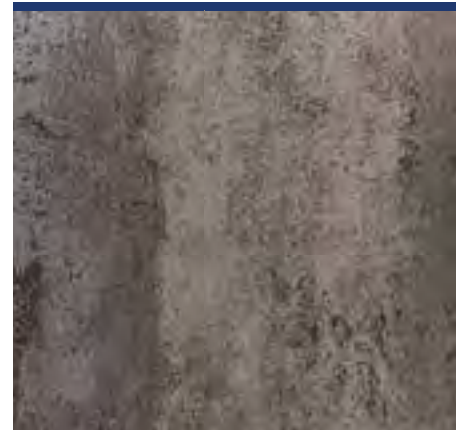
FF10-CONB
GREY CONCRETE



FF10-DGMET
DARK GREY METALLIC GEMSTONE



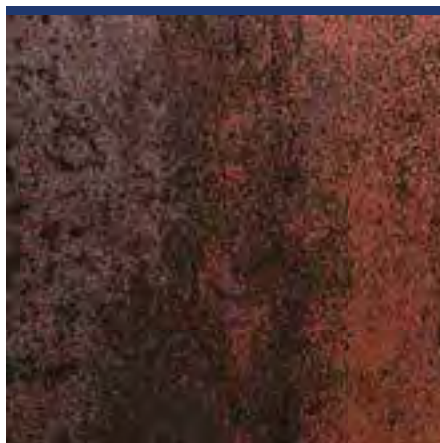
FF10-GM
GREY MARBLE



FF10-GRM
GREY RETRO METALLIC



FF10-GSS
GREY STORM SPARKLE



FF10-KUPFERRETR
COPPER RED METALLIC



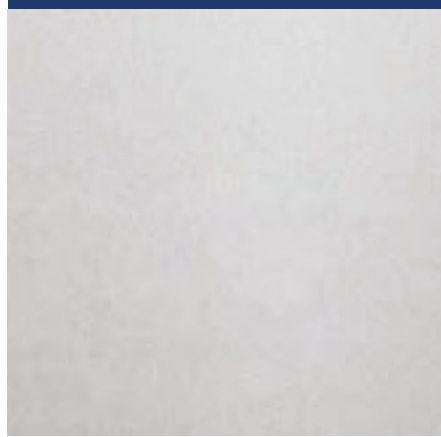
FF10-LGM
LIGHT GREY MARBLE



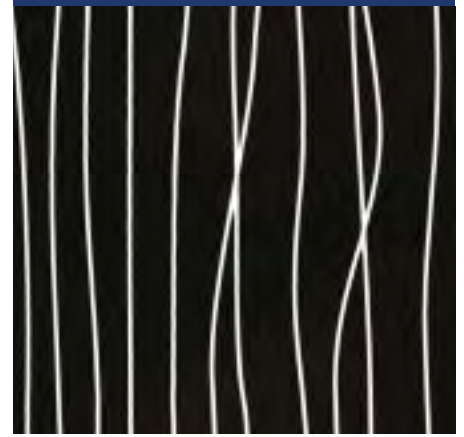
10mm Panels 2.4m x 1m



FF10-PERGA
PERGAMON MARBLE



FF10-SILMET
SILVER METALLIC GEMSTONE



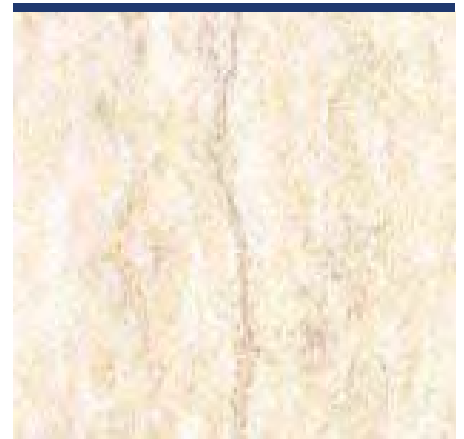
FF10-SSB
SILVER STRING BLACK



FF10-SSW
SILVER STRING WHITE



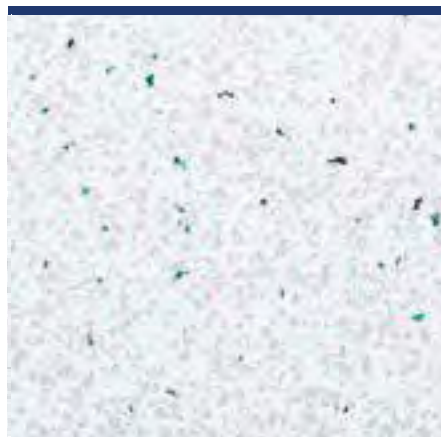
FF10-TDS
TRAVERTINE DIAMOND STONE



FF10-TRAV
TRAVERTINE



FF10-WAS
WHITE ARTIC SPARKLE



FF10-WDS
WHITE DIAMOND STONE



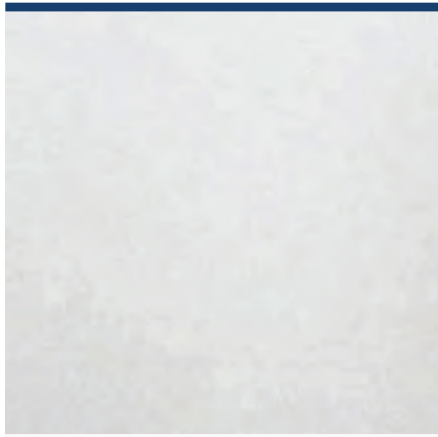
FF10-WF
WHITE FROST



10mm Panels 2.4m x 1m



FF10-WHG
WHITE HIGH GLOSS



FF10-WHMET
WHITE METALLIC GEMSTONE



FF10-WM
WHITE MARBLE



FF10-WRD
WHITE RAINBOW DROP



FF10-WSS
WHITE STORM SPARKLE



FF10-WWHG
WHITE WOOD HIGH GLOSS



NEW

FF10-DGB
GREY BRICK



NEW

FF10-RB
BEIGE BRICK



NEW

FF10
CARRERA



8mm Panels 2.7m x 250mm
8MM PANELS



FF8-ABB
**ABSTRACT
BRUSHED BLACK**



FF8-ABMET
**AQUA BLUE METALLIC
GEMSTONE**



FF8-ABS
**ABSTRACT
BRUSHED SILVER**



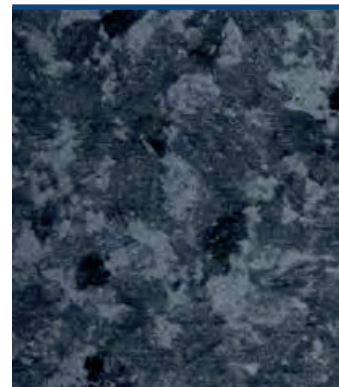
FF8-ABT
**ABSTRACT
BRUSHED TAUPÉ**



FF8-ABW
**ABSTRACT
BRUSHED WHITE**



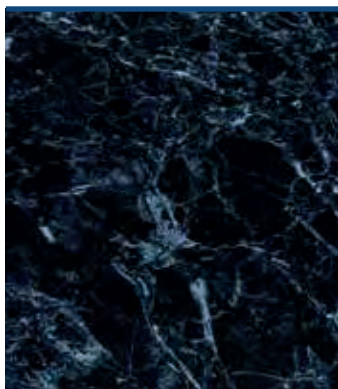
FF8-BCP
**BEIGE
CONCRETE**



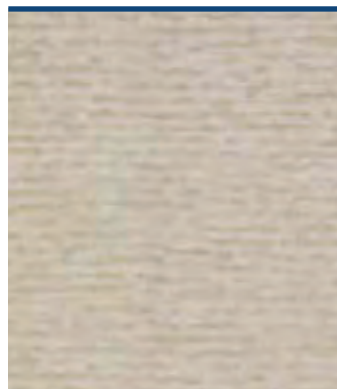
FF8-BG
**BLACK
GRAPHITE**



FF8-BLMET
**BLACK METALLIC
GEMSTONE**



FF8-BM
**BLACK
MARBLE**



FF8-BMOS
BEIGE MOSAIC



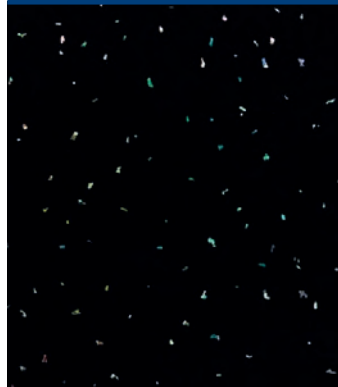
FF8-BRD
**BLACK
RAINBOW DROP**



8mm Panels 2.7m x 250mm



FF8-BRG
BRUSHED GREY



FF8-BS
BLACK SPARKLE



FF8-CONB
GREY CONCRETE



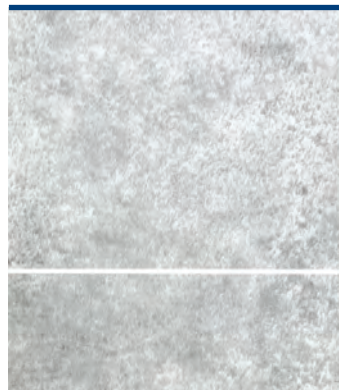
FF8-DGMET
DARK GREY
METALLIC GEMSTONE



FF8-DW
DRIFTWOOD



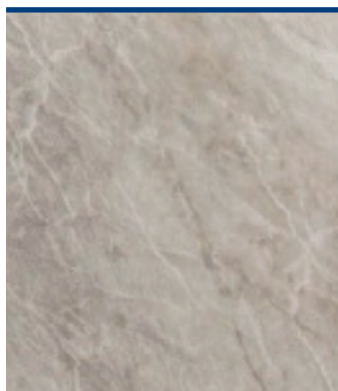
FF8-FLBEC
FLAGSTONE
BEIGE CUTLINE



FF8-FLBLC
FLAGSTONE
BLACK CUTLINE



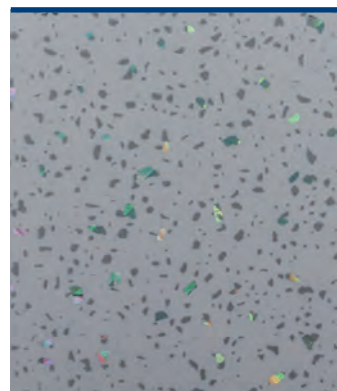
FF8-FLGRC
FLAGSTONE
GREY CUTLINE



FF8-GM
GREY
MARBLE



FF8-GRM
SILVER RETRO
METALLIC



FF8-GSS
GREY STORM
SPARKLE



FF8-LGM
LIGHT GREY
MARBLE



FF8-LMOS
LIME MOSAIC



FF8-PERGA
PERGAMON



FF8-PGMOS
PALE GREY
MOSAIC



FF8-SBBL
SMALL BRICK
BLACK



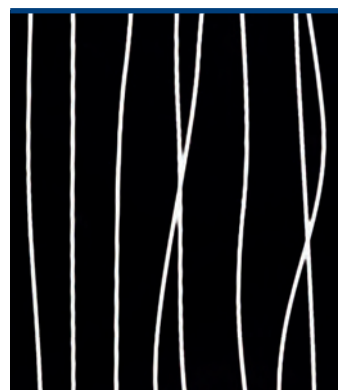
FF8-SBGR
SMALL BRICK
GREY



FF8-GRA
SMALL BRICK
GRAPHITE



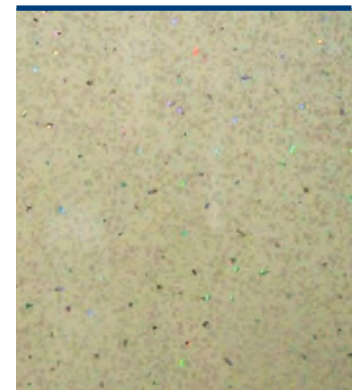
FF8-SILMET
SILVER METALLIC
GEMSTONE



FF8-SSB
SILVER STRING
BLACK



FF8-SSW
SILVER STRING
WHITE

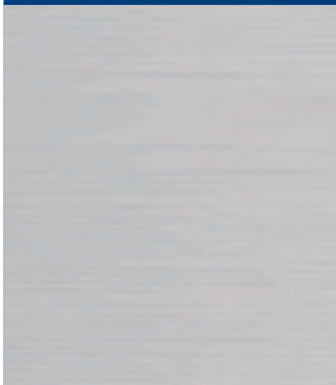


FF8-TDS
TRAVERTINE
DIAMOND STONE

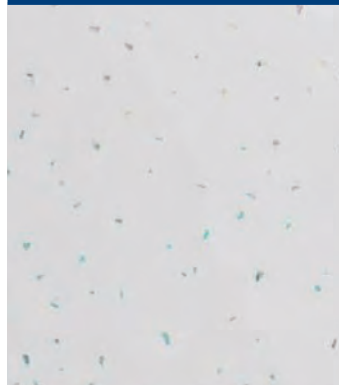


8mm Panels 2.7m x 250mm

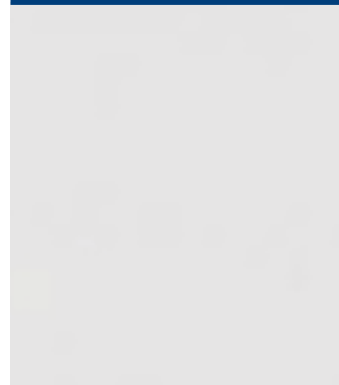
8MM PANELS



FF8-WAM
WHITE ASH
MATT



FF8-WAS
WHITE ARTIC
SPARKLE



FF8-WHG
WHITE HIGH
GLOSS



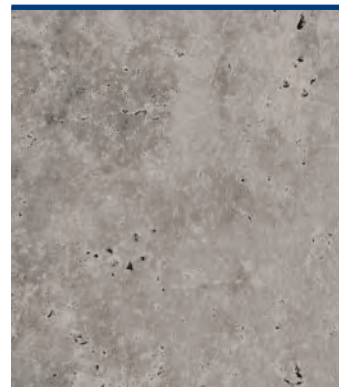
FF8-WHMET
WHITE METALLIC
GEMSTONE



FF8-WHMOS
WHITE MOSAIC



FF8-WRD
WHITE
RAINBOW DROP



FF8-CONBHG
GREY CONCRETE
HIGH GLOSS



FFC8-2.7OSS
ONE SILVER STRIP



FFC8-2.7TSS
TWO SILVER STRIP



Modern Decor



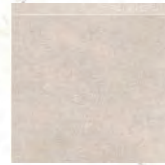
Antwerp Grey
8mm X 250mm X 2.6m



Havanna Dark Brown
8mm X 250mm X 2.6m



Havanna Silver Grey
8mm X 250mm X 2.6m



Klassic Tile Grey
8mm X 250mm X 2.6m



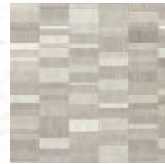
Morino
8mm X 250mm X 2.6m



MultiTile Dark Grey
8mm X 250mm X 2.6m



Nassau Dark Brown
8mm X 250mm X 2.6m



Nassau Silver
8mm X 250mm X 2.6m



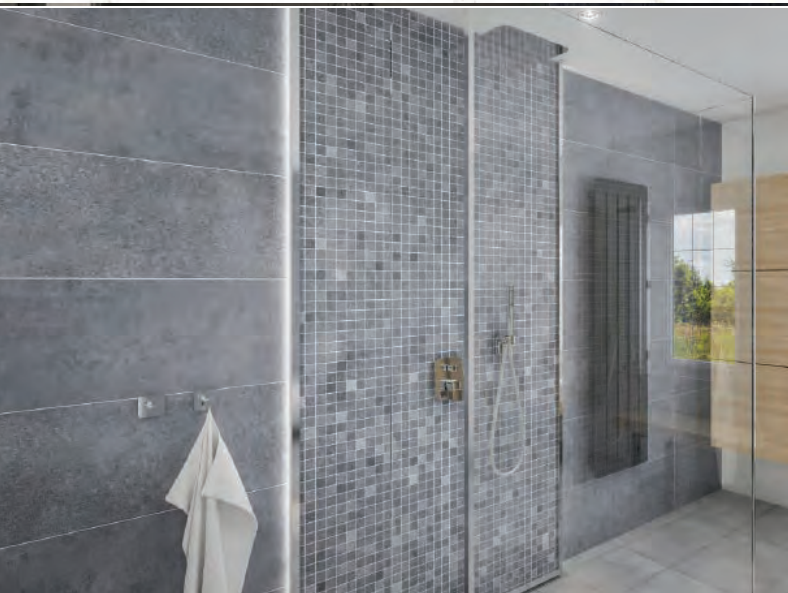
Sofia Dark Brown
8mm X 250mm X 2.6m



Sofia Light Brown
8mm X 250mm X 2.6m



Cambrian Copper
8mm X 250mm X 2.6m



Embedded Decor



Embedded Black Sparkle
8mm X 250mm X 2.6m
POA



Embedded White High Gloss
5 / 8mm X 250mm X 2.6m
POA



Embedded White Sparkle
8mm X 250mm X 2.6m
POA



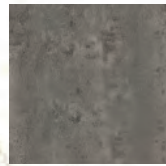
Brick & Stone Decor



Concrete Grey
5 / 8mm X 250mm X 2.6m



Grey Brick Matt
8mm X 250mm X 2.6m



Lava Graphite
5 / 8mm X 250mm X 2.6m



Mini Metro White
8mm X 250mm X 2.6m



Natural Stone Anthracite
8mm X 250mm X 2.6m



Natural Stone Beige
8mm X 250mm X 2.6m



Orion
8mm X 250mm X 2.6m



Red Brick
8mm X 250mm X 2.6m



Traditional Red Brick
8mm X 250mm X 2.6m

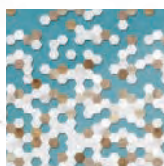


London Tile White
8mm X 250mm X 2.6m

Feature Wall Decor



British Made



Hexagon Dream Aqua
8mm X 250mm X 2.6m

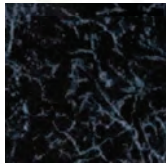


Klassic Decor



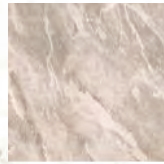
Beige Marble

5 / 8mm X 250mm X 2.6m



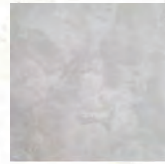
Black Marble

5 / 8mm X 250mm X 2.6m



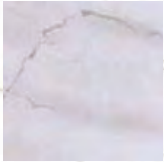
Dark Grey

5 / 8mm X 250mm X 2.6m



Grey Marble

5 / 8mm X 250mm X 2.6m



Pastel Grey

5 / 8mm X 250mm X 2.6m



White Ash

5 / 8mm X 250mm X 2.6m



Woodland Beige

5 / 8mm X 250mm X 2.6m



White High Gloss

5 / 8mm X 250mm X 2.6m



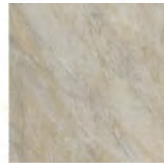
Light Wood Grey

8mm X 250mm X 2.6m



Light Wood Oak

8mm X 250mm X 2.6m

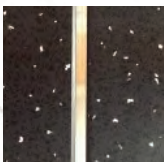


Pergamon

8mm X 250mm X 2.6m



Embedded Decor



Embedded Black Sparkle

8mm X 250mm X 2.6m



Embedded White High Gloss

5 / 8mm X 250mm X 2.6m



Embedded White Sparkle

8mm X 250mm X 2.6m



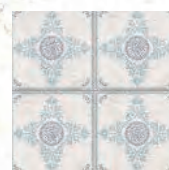
400mm Decor



Copenhagen Blue
8mm X 400mm X 2.6m

Feventa Beige
8mm X 400mm X 2.6m

Feventa Light Grey
8mm X 400mm X 2.6m



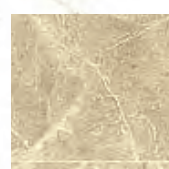
Modern Blue Tile
8mm X 400mm X 2.6m



Onxy Beige
8mm X 400mm X 2.6m



Onxy Grey
8mm X 400mm X 2.6m



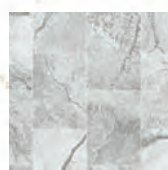
Sandstone Beige
8mm X 400mm X 2.6m



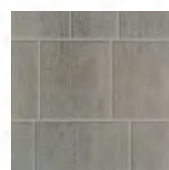
Sandstone Grey
8mm X 400mm X 2.6m



Trezzano Black
8mm X 400mm X 2.6m

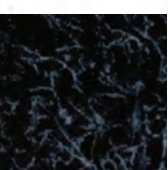


Trezzano Grey
8mm X 400mm X 2.6m



MultiTile Light Grey Small, Medium or Large Tile
8mm X 250mm X 2.6m

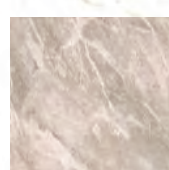
1m Wide Decor



Black Marble
10mm X 1m X 2.4m



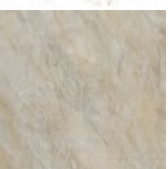
Black Sparkle
10mm X 1m X 2.4m



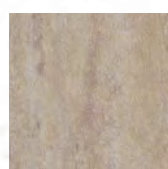
Dark Grey
10mm X 1m X 2.4m



Pastel Grey
10mm X 1m X 2.4m



Pergamon
10mm X 1m X 2.4m



Travertine
10mm X 1m X 2.4m



White High Gloss
10mm X 1m X 2.4m



White Sparkle
10mm X 1m X 2.4m

PEARL PLASTICS LTD

PUSHFIT WASTE SYSTEM

z253 32mm and 40mm Pushfit Waste Pipe

Product Code	Description	Distributors List
3M1.25*	32mm 3m Waste Pipe	£3.04
3M1.5*	40mm 3m Waste Pipe	£3.23

z254 32mm and 40mm Pushfit Waste Fittings

Product Code	Description	Distributors List
B1.25*	32mm 90° Knuckle Bend	£0.56
B1.5*	40mm 90° Knuckle Bend	£0.56
BS1.25*	32mm 92.5° Swept Bend	£0.56
BS1.5*	40mm 92.5° Swept Bend	£0.56
BSP1.25*	32mm 135° Obtuse Bend	£0.56
BSP1.5*	40mm 135° Obtuse Bend	£0.56
TS1.25*	32mm 90° Swept Branch	£0.56
TS1.5*	40mm 90° Swept Branch	£0.56
PC1.25*	32mm Pipe Clip	£0.22
PC1.5*	40mm Pipe Clip	£0.22
SC1.25*	32mm Straight Connector	£0.56
SC1.5*	40mm Straight Connector	£0.56
SP1.25*	32mm Socket Plug	£0.54
SP1.5*	40mm Socket Plug	£0.54
PB1.25*	32mm P-S Trap Convertor	£0.64
PB1.5*	40mm P-S Trap Convertor	£0.64
R1.25T1.5*	40-32mm Reducer	£0.55
PL500NX	500ml Soluble Lubricant	£2.65
PL250NX	250ml Soluble Lubricant	£2.12
KPSL1000	1 Litre Soluble Lubricant	£8.81

* Available in Black, Grey and White

PEARL PLASTICS LTD

TRAPS

z260_ 32mm and 40mm Bottle Traps

Product Code	Description	Distributors List
TB33	32mm Bottle Trap 38mm Seal	£1.96
TB43	40mm Bottle Trap 38mm Seal	£3.18
TB37	32mm Bottle Trap 76mm Seal	£1.97
TB37T	32mm Bottle Trap Telescopic	£4.50
TB47	40mm Bottle Trap 76mm Seal	£1.85
TB47T	40mm Telescopic Bottle Trap	£4.40
TB34	32mm Bottle Trap with Single Adaptor	£8.75
TB44	40mm Bottle Trap with Double Adaptor	£8.75

z261 32mm and 40mm P Traps

Product Code	Description	Distributors List
TP33	32mm P Trap 38mm Seal	£1.99
TP37	32mm P Trap 76mm Seal	£1.99
TP37T	32mm Telescopic P Trap 38mm Seal	£4.62
TP43	40mm P Trap 38mm Seal	£1.97
TP47	40mm P Trap 76mm Seal	£1.97
TP47T	P Trap 76mm Seal Telescopic	£4.62

z262 32mm Pedestal Trap

Product Code	Description	Distributors List
TPO1	32mm Pedestal Trap	£4.36

z263 32mm and 40mm S Traps

Product Code	Description	Distributors List
TS33	32mm S Trap 38mm Seal	£2.43
TS37	32mm S Trap 76mm Seal	£3.47
TS43	40mm S Trap 38mm Seal	£2.64
TS47	40mm S Trap 76mm Seal	£4.05

z264 32mm and 40mm Bath Traps

Product Code	Description	Distributors List
TSB42	40mm Bath Trap 20mm Seal & Eye	£2.46
TSB43	32mm Bath Trap 20mm Seal & Eye	£3.17

z265 40mm Washing Machine Traps

Product Code	Description	Distributors List
TW471	40mm Washing Machine Trap with Pipe	£4.35
TW472	Appliance Half Trap 76mm Seal	£4.35
TW473	Washing Machine Double Trap	£9.27

z266 40mm Shower Trap

Product Code	Description	Distributors List
KSTCH	Chrome Shower Trap	£9.96
KSTWH	White Shower Trap	£13.57

PEARL PLASTICS LTD

SOLVENT WASTE SYSTEM

z255_32mm, 40mm and 50mm Solvent Waste Pipes

Product Code	Description	Distributors List
KPMU01*	32mm mtr Solvent Waste Pipe	£2.91
KPMU02*	40mm 3mtr Solvent Waste Pipe	£3.24
KPMU03*	50mm 3mtr Solvent Waste Pipe	£5.39

z256_32mm, 40mm and 50mm Solvent Waste Fittings

Product Code	Description	Distributors List
KPMU07*	32mm Straight Coupling	£0.54
KPMU08*	40mm Straight Coupling	£0.54
KPMU09*	50mm Straight Coupling	£1.03
KPMU10*	32mm 90° Knuckle Bend	£0.54
KPMU11*	40mm 90° Knuckle Bend	£0.54
KPMU12*	50mm 90° Knuckle Bend	£1.03
KPMU14*	32mm 92.5° Swept Bend	£0.54
KPMU15*	40mm 92.5° Swept Bend	£0.54
KPMU16*	50mm 92.5° Swept Bend	£1.03
KPMU18*	32mm 135° Bend	£0.54
KPMU19*	40mm 135° Bend	£0.54
KPMU20*	50mm 135° Bend	£1.03
KPMU22*	32mm Tee	£0.54
KPMU23*	40mm Tee	£0.54
KPMU24*	50mm Tee	£1.23
KPMU26*	32mm 92.5° Conversion Bend	£0.54
KPMU27*	40mm 92.5° Conversion Bend	£0.54
KPMU28*	50mm 92.5° Conversion Bend	£1.03
KPMU30*	32mm Access Plug	£0.82
KPMU31*	40mm Access Plug	£0.82
KPMU32*	50mm Access Plug	£1.17
KPMU34*	32mm Pipe Clip	£0.24
KPMU35*	40mm Pipe Clip	£0.24
KPMU36*	50mm Pipe Clip	£0.34
KPMU38*	40mm x 32mm Reducer	£0.66
KPMU39*	50mm x 32mm Reducer	£1.03
KPMU40*	50mm x 40mm Reducer	£1.03
KPMU42*	32mm 135° Branch	£0.73
KPMU43*	40mm 135° Branch	£0.73
KPMU44*	50mm 135° Branch	£1.32
KPMU62*	32mm x 21.5mm Reducer	£0.76
KPMU63*	40mm x 21.5mm Reducer	£0.76
SC125	125ml Solvent Cement	£2.97
SC250	250ml Solvent Cement	£6.76

* Available in Black, White and Grey



PEARL PLASTICS LTD

10 MM BATHROOM PANELS & TRIMS

Product Code	Description	
FF10-BCP	10MM BEIGE CONCRETE PANEL 2.4MX1M	£32.02
FF10-BM	10MM BLACK MARBLE PANEL 2.4MX1M	£32.02
FF10-BS	10MM BLACK SPARKLE PANEL 2.4MX1M	£32.02
FF10-CONHG	10MM CONCRETE GREY HIGH GLOSS 2.4MX1M	£32.02
FF10-CONB	10MM GREY CONCRETE PANEL 2.4MX1M	£32.02
FF10-GM	10MM GREY MARBLE PANEL 2.4MX1M	£32.02
FF10-LGM	10MM LIGHT GREY MARBLE PANEL 2.4MX1M	£32.02
FF10-WAS	10MM WHITE ARTIC SPARKLE PANEL 2.4MX1M	£32.02
FF10-WDS	10MM WHITE DIAMOND STONE PANEL 2.4MX1M	£32.02
FF10-WHG	10MM WHITE HIGH GLOSS PANEL 2.4MX1M	£32.02
FF10-WM	10MM WHITE MARBLE PANEL 2.4MX1M	£32.02
FF10-WF	10MM WHITE FROST PANEL 2.4MX1M	£32.02
FF10-WHMET	10MM WHITE METALIC GEMSTONE PANEL 2.4MX1M	£32.02
FF10-WRD	10MM WHITE RAINBOW DROP PANEL 2.4MX1M	£32.02
FF10-WSS	10MM WHITE STORM SPARKLE PANEL 2.4MX1M	£32.02
FF10-WVHG	10MM WHITE WOOD HIGH GLOSS PANEL 2.4MX1M	£32.02
FF10-BESLAT	10MM BEIGE SLATE PANEL 2.4MX1M	£32.02
FF10-BF	10MM BLACK FROST PANEL 2.4MX1M	£32.02
FF10-BLMET	10MM BLACK METALIC GEMSTONE PANEL 2.4MX1M	£32.02
FF10-BRD	10MM BLACK RAINBOW DROP PANEL 2.4MX1M	£32.02
FF10-BRG	10MM BRUSHED GREY PANEL 2.4MX1M	£32.02
FF10-BRW	10MM BRUSHED WHITE PANEL 2.4MX1M	£32.02
FF10-BSLAT	10MM BLACK SLATE PANEL 2.4MX1M	£32.02
FF10-DGMET	10MM DARK GREY METALIC GEMSTONE PANEL 2.4MX1M	£32.02
FF10-GRM	10MM GREY RETRO METALIC PANEL 2.4MX1M	£32.02
FF10-GSS	10MM GREY STORM SPARKLE PANEL 2.4MX1M	£32.02
FF10-KUPFERRETR	10MM COPPER RED METALIC PANEL 2.4MX1M	£32.02
FF10-PERGA	10MM PERGAMON MARBLE PANEL 2.4MX1M	£32.02
FF10-SILMET	10MM SILVER METALIC GEMSTONE PANEL 2.4MX1M	£32.02
FF10-SSB	10MM SILVER STRING BLACK PANEL 2.4MX1M	£32.02
FF10-SSW	10MM SILVER STRING WHITE PANEL 2.4MX1M	£32.02
FF10-ABMET	10MM AQUA BLUE METALIC 2.4MX1M	£32.02
FF10-TDS	10MM TRAVERTINE DIAMOND STONE PANEL 2.4MX1M	£32.02
FF10-TRAV	10MM TRAVERTINE MARBLE PANEL 2.4MX1M	£32.02
FF10-DGB	10MM GREY BRICK PANEL 2.4MX1M	£32.02
FF10-RB	10MM BEIGE BRICK PANEL 2.4MX1M	£32.02
FF10-CM	10MM CARRERA MARBLE PANEL 2.4MX1M	£32.02
Product Code	Description	
TRIM10C	10MM EXTERNAL TRIM CHROME	£4.94
TRIM10IC	10MM INTERNAL TRIM CHROME	£3.14
TRIM10W	10MM INTERNAL TRIM WHITE	£3.14
TRIM10WEX	10MM EXTERNAL TRIM WHITE	£3.14
ETC10AS	10MM ALUMINIUM SILVER CURVED END TRIM	£7.72
EC10AS	10MM ALUMINIUM SILVER EXTERNAL CORNER	£10.16
EC10WG	10MM WHITE GLOSS EXTERNAL CORNER	£2.94
EC10C	10MM CHROME EXTERNAL CORNER	£4.91
KDCECB10	10MM BLACK GLOSS EXTERNAL CORNER	£3.18
IC10AS	10MM ALUMINIUM SILVER INTERNAL CORNER	£10.16
IC10WG	10MM WHITE GLOSS INTERNAL CORNER	£3.05
KDCICB10	10MM BLACK GLOSS INTERNAL CORNER	£3.05
IC10C	10MM CHROME INTERNAL CORNER	£3.34
KDCJTCH10	10MM ALUMINIUM SILVER H TRIM	£10.50
KDCJTW10	10MM WHITE GLOSS H TRIM	£2.95
KDCJTB10	10MM BLACK GLOSS H TRIM	£2.94
KDCJTS10	10MM CHROME H TRIM	£6.63
ET10AS	10MM ALUMINIUM SILVER END TRIM	£7.61
ET10WG	10MM WHITE GLOSS END TRIM	£2.11
KDCETB10	10MM BLACK GLOSS END TRIM	£2.32
ET10C	10MM CHROME END TRIM	£3.87
ENDS10MM	10MM END TRIM WHITE	£2.06
ENDS10MMC	10MM END TRIM CHROME	£3.92
SODALWHITE	WHITE SILICONE	£3.78
SODALCLEAR	CLEAR SILICONE	£3.78
X2SUPERG	SUPER GRIP SOLVENT FREE PANEL ADHESIVE	£2.42

PEARL PLASTICS LTD

8MM BATHROOM PANELS & TRIMS

Product Code	Description	Distributors List
FF8-ABMET	8MM AQUA BLUE METALIC GEMSTONE 250MM	£5.82
FF8-BCP	8MM BEIGE CONCRETE PANEL 250MM	£3.98
FF8-FLBEC	8MM FLAGSTONE BEIGE CUTLINE 250MM	£7.09
FF8-DW	8MM DRIFTWOOD PANEL 250MM	£5.82
FF8-GRA	8MM SMALL BRICK GRAPHITE 250MM	£5.82
FF8-TDS	8MM TRAVERTINE DIAMOND STONE 250MM	£5.82
FF8-ABW	8MM ABSTRACT BRUSHED WHITE 250MM	£5.83
FF8-ABT	8MM ABSTRACT BRUSHED TAUPE 250MM	£5.82
FF8-BM	8MM BLACK MARBLE PANEL 250MM	£3.98
FF8-BS	8MM BLACK SPARKLE PANEL 250MM	£4.51
FF8-ABB	8MM ABSTRACT BRUSHED BLACK 250MM	£5.82
FF8-BG	8MM BLACK GRAPHITE PANEL 250MM	£3.98
FF8-BLMET	8MM BLACK METALIC GEMSTONE 250MM	£4.88
FF8-BRD	8MM BLACK RAINBOW DROP 250MM	£4.50
FF8-SBBL	8MM SMALL BRICK BLACK 250MM	£5.82
FF8-SSB	8MM SILVER STRING BLACK 250MM	£5.82
FF8-FLBLC	8MM FLAGSTONE BLACK CUTLINE 250MM	£7.09
FF8-CONBHG	8MM CONCRETE GREY HIGH GLOSS 250MM	£3.98
FF8-CONB	8MM GREY CONCRETE PANEL 250MM	£3.98
FF8-GM	8MM GREY MARBLE PANEL 250MM	£3.98
FF8-LGM	8MM LIGHT GREY MARBLE PANEL 250MM	£3.98
FF8-ABS	8MM ABSTRACT BRUSHED SILVER 250MM	£5.82
FF8-BRG	8MM BRUSHED GREY PANEL 250MM	£4.09
FF8-DGMET	8MM DARK GREY METALIC 250MM	£5.22
FF8-FLGRC	8MM FLAGSTONE GREY CUTLINE 250MM	£7.09
FF8-GRM	8MM SILVER RETRO METALIC 250MM	£3.98
FF8-GSS	8MM GREY STORM SPARKLE 250MM	£4.51
FF8-PERGA	8MM PERGAMON PANEL 250MM	£3.98
FF8-SILMET	8MM SILVER METALIC GEMSTONE 250MM	£5.22
FF8-SBGR	8MM SMALL BRICK GREY 250MM	£5.82
FF8-WAS	8MM WHITE ARTIC SPARKLE PANEL 250MM	£4.51
FF8-WHG	8MM WHITE HIGH GLOSS PANEL 250MM	£3.75
FF8-SSW	8MM SILVER STRING WHITE 250MM	£5.58
FF8-WAM	8MM WHITE ASH MATT 250MM	£3.98
FF8-WHMET	8MM WHITE METALIC GEMSTONE 250MM	£5.22
FF8-WRD	8MM WHITE RAINBOW DROP PANEL 250MM	£4.51
FF8-BMOS	8MM BEIGE MOSAIC PANEL 250MM	£5.82
FF8-LMOS	8MM LIME MOSAIC PANEL 250MM	£5.82
FF8-PGMOS	8MM PALE GREY MOSAIC PANEL 250MM	£5.82
FF8-WHMOS	8MM WHITE MOSAIC PANEL 250MM	£5.82
FFC8-2.7OSS	ONE SILVER STRIP WHITE GLOSS CEILING PANEL	£4.42
FFC8-2.7TSS	TWO SILVER STRIP WHITE GLOSS CELING PANEL	£4.42

PEARL PLASTICS LTD

8MM BATHROOM PANELS & TRIMS

Product Code	Description	Distributors List
TRIM8ECH	8MM EXTERNAL TRIM CHROME	£2.85
TRIM8ICH	8MM INTERNAL TRIM CHROME	£2.85
TRIM8IWH	8MM INTERNAL TRIM WHITE	£2.85
TRIM8EWH	8MM EXTERNAL TRIM WHITE	£2.85
EC8AS	8MM ALUMINIUM SILVER EXTERNAL CORNER	£2.96
EC8W	8MM WHITE EXTERNAL CORNER	£1.98
EC8C	8MM CHROME EXTERNAL CORNER	£3.14
KDCECB8	8MM BLACK EXTERNAL CORNER	£1.96
IC8AS	8MM ALUMINIUM SILVER INTERNAL CORNER	£5.15
IC8C	8MM CHROME INTERNAL CORNER	£2.77
KDCICB8	8MM BLACK INTERNAL CORNER	£2.56
KDCICW8	8MM WHITE INTERNAL CORNER	£4.55
KDCJTB8	8MM BLACK H TRIM	£4.55
KDCJTW8	8MM WHITE H TRIM	£4.55
HT8C	8MM CHROME H TRIM	£5.26
HT8AS	8MM ALUMINIUM SILVER H TRIM	£4.74
ET8AS	8MM ALUMINIUM SILVER END TRIM	£4.74
KDCETB8	8MM END TRIM BLACK	£2.44
ENDS8WH	8MM END TRIM WHITE	£1.99
ENDS8CH	8MM END TRIM CHROME	£3.34
ST8B	8MM BLACK SCOTIA TRIM	£3.43
ST8C	8MM CHROME SCOTIA TRIM	£7.37
ST8W	8MM WHITE SCOTIA TRIM	£3.43
RA25/25BG	BLACK GLOSS RIDGED ANGLE	£2.65
RA25/25BM	BLACK MATT RIDGED ANGLE	£7.15
RA25/25C	CHROME RIDGED ANGLE	£7.27
RA25/25WM	WHITE MATT RIDGED ANGLE	£7.13
KRA25	WHITE RIDGED ANGLE	£2.94
QS	SILVER QUAD 19MM	£3.91
KQ19W	WHITE QUAD 19MM	£2.15

PEARL PLASTICS LTD

8mm Modern Décor

Product Code	Description	List Price
KDCANTG8	8mm x 250mm x 2.6m Antwerp Grey	£8.51
KDCCAMC8	8mm X 250mm X 2.6m Cambrian Copper	£8.51
KDCHDB8	8mm X 250mm X 2.6m Havana Dark Brown	£8.51
KDCHSG8	8mm X 250mm X 2.6m Havana Silver Grey	£8.51
KDCKTG8	8mm x 250mm x 2.6m Klassic Tile Grey	£8.51
KDCKTGR8	8mm x 250mm x 2.6m Klassic Tile Graphite	£8.51
KDCKTST8	8mm x 250mm x 2.6m Klassic Tile Stone	£8.51
KDCKTT8	8mm x 250mm x 2.6m Klassic Tile Taupe	£8.51
KDCMOR8	8mm X 250mm X 2.6m Morino	£8.51
KDCNDB8	8mm x 250mm x 2.6m Nassau Dark Brown	£8.51
KDCNS8	8mm x 250mm x 2.6m Nassau Silver	£8.51
KDCSDB8	8mm X 250mm X 2.6m Sofial Dark Brown	£8.51
KDCSLB8	8mm X 250mm X 2.6m Sofial Light Brown	£8.51
KDCDOLG8	8mm x 250mm x 2.6m Distressed Oak Light Grey	£8.51
KDCLWG8	8mm x 250mm x 2.6m Light Wood Grey	£8.51
KDCLWO8	8mm x 250mm x 2.6m Light Wood Oak	£8.51
KDCGB8	8mm X 250mm X 2.6m Grey Brick Matt	£8.51
KDCLG8	8mm X 250mm X 2.6m Lava Graphite	£8.51
KDCLTW8	8mm X 250mm X 2.6m London Tile White	£8.51
KDCMMW8	8mm X 250mm X 2.6m Mini Metro White	£8.51
KDCNSA8	8mm X 250mm X 2.6m Natural Stone Anthracite	£8.51
KDCNSB8	8mm X 250mm X 2.6m Natural Stone Beige	£8.51
KDCO8	8mm X 250mm X 2.6m Orion	£8.51
KDCRB8	8mm X 250mm X 2.6m Red Brick	£8.51
KDCMB8	8mm x 250mm x 2.6m Midnight Mosaic Blue	£9.55
KDCMG8	8mm x 250mm x 2.6m Midnight Mosaic Graphite	£9.55
KDCMSB8	8mm x 250mm x 2.6m Midnight Stone Blue	£9.55
KDCMSG8	8mm x 250mm x 2.6m Midnight Stone Graphite	£9.55

8mm 400mm Décor

Product Code	Description	List Price
KDCCB8	8mm x 400mm x 2.6m Copenhagen Blue	£15.76
KDCFB8	8mm x 400mm x 2.6m Feventa Beige	£15.76
KDCFLG8	8mm x 400mm x 2.6m Feventa Light Grey	£15.76
KDCMBT8	8mm x 400mm x 2.6m Modern Blue Tile	£15.76
KDCOB8	8mm x 400mm x 2.6m Onxy Beige	£15.76
KDCOG8	8mm x 400mm x 2.6m Onxy Grey	£15.76
KDCSSB8	8mm x 400mm x 2.6m Sandstone Beige	£15.76
KDCSSG8	8mm x 400mm x 2.6m Sandstone Grey	£15.76
KDCTB8	8mm x 400mm x 2.6m Trezzano Black	£15.76
KDCTG8	8mm x 400mm x 2.6m Trezzano Grey	£15.76
KDCMTLLG8	8mm x 400mm x 2.6m MultiTile Large Light Grey	£15.76
KDCMTMLG8	8mm x 400mm x 2.6m MultiTile Medium Light Grey	£15.76
KDCMTSLG8	8mm x 400mm x 2.6m MultiTile Small Light Grey	£15.76

PEARL PLASTICS LTD

10mm Modern Décor

Product Code	Description	List Price
KDCCTW10	10mm x 1m x 2.4m Classic Tile White	£59.09
KDCDOG10	10mm x 1m x 2.4m Distressed Oak Grey	£59.09
KDCDOLG10	10mm x 1m x 2.4m Distressed Oak Light Grey	£59.09
KDCLTW10	10mm x 1m x 2.4m London Tile White	£59.09
KDCMOR10	10mm x 1m x 2.4m Morino	£59.09
KDCKTG10	10mm x 1m x 2.4m Klassic Tile Grey	£59.09
KDCKTGR10	10mm x 1m x 2.4m Klassic Tile Graphite	£59.09
KDCKTST10	10mm x 1m x 2.4m Klassic Tile Stone	£59.09
KDCKTT10	10mm x 1m x 2.4m Klassic Tile Taupe	£59.09
KDCANTG10	10mm x 1m x 2.4m Antwerp Grey	£59.09
KDCHSG10	10mm x 1m x 2.4m Havana Silver Grey	£59.09
KDCNS10	10mm x 1m x 2.4m Nassau Silver	£59.09
KDCRB10	10mm x 1m x 2.4m Red Brick	£59.09
KDCGB10	10mm x 1m x 2.4m Grey Brick Matt	£59.09
KDCNSA10	10mm x 1m x 2.4m Natural Stone Anthracite	£59.09
KDCNSB10	10mm x 1m x 2.4m Natural Stone Beige	£59.09

10mm Premium Décor

Product Code	Description	List Price
KDCMB10	10mm x 1m x 2.4m Midnight Stone Mosaic Blue	£72.84
KDCMG10	10mm x 1m x 2.4m Midnight Stone Mosaic Graphite	£72.84
KDCMSB10	10mm x 1m x 2.4m Midnight Stone Blue	£72.84
KDCMSG10	10mm x 1m x 2.4m Midnight Stone Graphite	£72.84
KDCHDA10	10mm x 1m x 2.4m Hexagon Dream Aqua	£72.84

Certificate of Compliance



No. 11180629.JANDT33

Certificate's
Holder:

Certification ECM
Mark:



Product: PVC ceiling panel, PVC wall panel,
PVC trim profile
Model(s): Width: 10cm to 120cm
Thickness: 5 to 12mm

Verification to: Standard:
EN 13245-2:2008/AC:2009

related to CE Directive(s):
R 305/2011 (Regulation for the Marketing of
Construction Products)

Remark: The product(s) has been verified on a voluntary basis. The product(s) satisfies the requirements of the Certification Mark of ECM, in reference to the above listed Standard(s). The above Compliance Mark can be affixed on the product(s) accordingly to the ECM regulation about its release and its use. The regulation can be found at www.entecerma.it. This Certificate of Compliance can be checked for validity at www.entecerma.it

This verification doesn't imply assessment of the production of the product(s).

Additional information, clarification about the **CE** Marking:



We attest that a TCF for the **CE** Marking process is in place. Whereas the Manufacturer is Responsible to start the **CE Marking Certification Procedure** through an appointed Notified Body and the perform all the necessary activities, as required by the Directive and accepted by the Notified Body, before placing the **CE** Mark on the product(s).

Date of issue 29 June 2018

Expiry date 28 June 2023

Chief Manager
Matteo Morina



Deputy Manager
Amanda Payne



Ente Certificazione Macchine Srl

Via Ca' Bella, 243 – Loc. Castello di Serravalle – 40053 Valsamoggia (BO) - ITALY
☎ +39 051 6705141 📠 +39 051 6705156 ✉ info@entecerma.it 🌐 www.entecerma.it

Test Verification of Conformity

On the basis of the tests undertaken, the sample<s> of the below product have been found to comply with the requirements of the referenced specification<s>/standard<s> at the time the tests were carried out. This verification is part of the full test report<s> and should be read in conjunction with it <them>.

Applicant Name & Address:

Province, China

Product Description:

Pvc panel

Ratings & Principle

Class A

Characteristics:

Flame spread index, FSI = 25

Smoke developed index, SDI = 450

Models/Type References:

MSPW600-10

Specification<s>/Standard<s>:

ASTM E84-16

Verification Issuing Office

Intertek Testing Services Shenzhen Ltd. Shanghai Fengxian Branch

Name & Address:

Plant 5, No. 6958 Daye Road, Fengxian District, Shanghai, China

Test Report Number<s>:

181226003SHF-002

As Specified in 803.1.2 of International Building Code (IBC) 2018:

CHAPTER 8 INTERIOR FINISHES

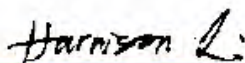
SECTION 803 WALL AND CEILING FINISHES

803.1.2 Interior wall and ceiling finish materials tested in accordance with ASTM E84 or UL 723. Interior wall and ceiling finish materials shall be classified in accordance with ASTM E84 or UL 723. Such interior finish materials shall be grouped in the following classes in accordance with their flame spread and smoke-developed indices.

Class A = Flame spread index 0-25; smoke developed index 0-450.

Class B = Flame spread index 26-75; smoke developed index 0-450.

Class C = Flame spread index 76-200; smoke developed index 0-450.



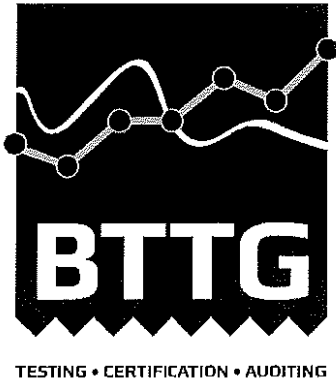
Signature

Name: Harrison Li

Position: Technical Supervisor

Date: 22/1/2019

This Verification is for the exclusive use of Intertek's client and is provided pursuant to the agreement between Intertek and its Client. Intertek's responsibility and liability are limited to the terms and conditions of the agreement. Intertek assumes no liability to any party, other than to the Client in accordance with the agreement, for any loss, expense or damage occasioned by the use of this Verification. Only the Client is authorized to permit copying or distribution of this Verification. Any use of the Intertek name or one of its marks for the sale or advertisement of the tested material, product or service must first be approved in writing by Intertek. The observations and test/inspection results referenced in this Verification are relevant only to the sample tested/inspected. This Verification by itself does not imply that the material, product, or service is or has ever been under an Intertek certification program.



Wira House, West Park Ring Road, Leeds, LS16 6QL, UK.
Telephone: +44 (0) 113 259 1999
Email: info@bttg.co.uk
Website: www.bttg.co.uk

Date: 18 February 2019

Our Ref: 27/04911A2/02/19
Your Ref:

Page: 1 of 5

Client: Kalsi Plastics UK Ltd
5 Tomey Road
Tyseley
Birmingham
B11 2NJ

Job Title: Fire Test on One Panel Samples

Client's Order No: --

Date of Receipt: 5 February 2019

Description of Sample(s): One panel sample, reference: 7.5 mm x 250 mm PVC wall panel design Marino

Work Requested: We were asked to make the following test(s):
BS 476 Part 7:1987

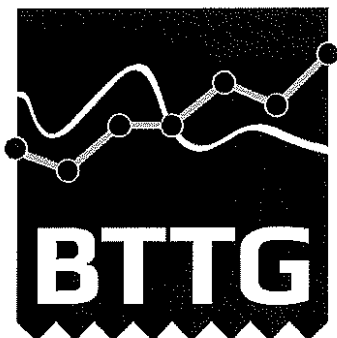
Note: This report relates only to the samples submitted and as described in the report.

- * subcontracted test, UKAS accredited
- ** subcontracted test, EN ISO/IEC 17025 accredited
- *** not UKAS accredited



1066

Notified Body
for PPE Directive,
Construction Products Regulation
& Marine Equipment Directive
I.D. No. 0338 & 0339



TESTING • CERTIFICATION • AUDITING

Wira House, West Park Ring Road, Leeds, LS16 6QL, UK.

Telephone: +44 (0) 113 259 1999

Email: info@bttg.co.uk

Website: www.bttg.co.uk

Date: 18 February 2019

Our Ref: 27/04911A2/02/19
Your Ref:

Page: 2 of 5

Client: Kalsi Plastics UK Ltd

FIRE TESTS ACCORDING TO BS 476:PART 7:1987 (AS AMENDED) (Method for classification of the surface spread of flame of products)

Date of Test: 15/02/2019

Conditioning

The composite samples were conditioned to constant mass at a temperature of $23\pm 2^{\circ}\text{C}$ and a relative humidity of $50\pm 10\%$ and maintained in this condition until required for testing

Procedure

The test was carried out in accordance with BS 476-7:1987. The sample was supplied by the sponsor of the test. Each specimen was tested adhered to a 12mm thick calcium silicate board with Soudal Fix All High Tack.

The following were recorded:-

- a) the time at which the flame front crosses each vertical reference line;
- b) the maximum extent of flame spread during the first 1.5 min from the start of the test;
- c) the maximum extent of flame spread during the whole test i.e. 10 min or less (if applicable)
- d) the time (and distance) at which maximum flame spread is reached.

The flame spread at 1.5min and the final flame spread results were compared with the standard class limits and a classification was assigned.



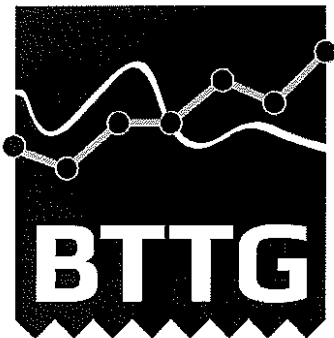
1066

Shirley® Technologies Limited. Registered Office: Wira House, West Park Ring Road, Leeds, LS16 6QL.
A company registered in England & Wales with company number 04669651. VAT Number GB 816764800.

BTTG™ and Shirley® are trade names of Shirley Technologies Limited

The supply of all goods and services is subject to our standard terms of business, copies of which are available on request.
Our laboratories are accredited to EN ISO/IEC 17025.

Copyright © 2019 Shirley Technologies Limited. All rights reserved



TESTING • CERTIFICATION • AUDITING

Wira House, West Park Ring Road, Leeds, LS16 6QL, UK.

Telephone: +44 (0) 113 259 1999

Email: info@bttg.co.uk

Website: www.bttg.co.uk

Date: 18 February 2019

Our Ref: 27/04911A2/02/19

Your Ref:

Page: 3 of 5

Client: Kalsi Plastics UK Ltd

Requirements

The class limits for flamespread, detailed in BS 476:Part 7: are set out below.

	Flame spread at 1.5 min (mm)	Final flame spread (mm)
Class 1	165 (+25)	165 (+25)
Class 2	215 (+25)	455 (+45)
Class 3	265 (+25)	710 (+75)
Class 4	Exceeding Class 3 limits.	

A definitive classification is based on a sample of six specimens and the figure in brackets gives the tolerance by which only one specimen in six may exceed the class limit assigned.

Results

The test results relate only to the behaviour of the test specimens of the product under the particular conditions of test; they are not intended to be the sole criterion for assessing the potential fire hazard of the product in use.

Time for flame spread to reach (s)								Flame spread at 1.5 min (mm)	Maximum flame spread (mm)	Time to reach maximum flame spread (s)
75	165	215	265	455	710	785	825			
--	--	--	--	--	--	--	--	70	70	60
107	--	--	--	--	--	--	--	70	120	126
79	--	--	--	--	--	--	--	75	120	126
--	--	--	--	--	--	--	--	60	60	60
--	--	--	--	--	--	--	--	70	70	62
83	--	--	--	--	--	--	--	75	75	120

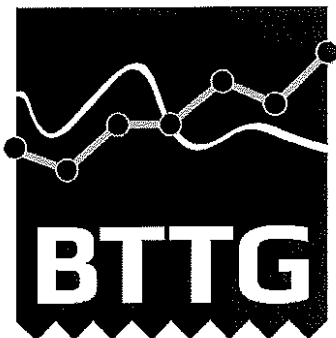


1066

Shirley® Technologies Limited. Registered Office: Wira House, West Park Ring Road, Leeds, LS16 6QL. A company registered in England & Wales with company number 04669651. VAT Number GB 816764800.

BTTG™ and Shirley® are trade names of Shirley Technologies Limited. The supply of all goods and services is subject to our standard terms of business, copies of which are available on request. Our laboratories are accredited to EN ISO/IEC 17025.

Copyright © 2019 Shirley Technologies Limited. All rights reserved



TESTING • CERTIFICATION • AUDITING

Wira House, West Park Ring Road, Leeds, LS16 6QL, UK.

Telephone: +44 (0) 113 259 1999

Email: info@bttg.co.uk

Website: www.bttg.co.uk

Date: 18 February 2019

Our Ref: 27/04911A2/02/19
Your Ref:

Page: 4 of 5

Client: Kalsi Plastics UK Ltd

Classification

The results indicate that the sample met the performance requirements of Class 1.

Uncertainty of measurement has not been taken into account when presenting the test result. The relevant uncertainty value is included as an annex which forms an integral part of the report.

Reported by:.....  A Shute, Senior Lab Technician

Countersigned by:.....  P Doherty, Executive Manager

Enquiries concerning this report should be addressed to Customer Services.



1066

Shirley® Technologies Limited. Registered Office: Wira House, West Park Ring Road, Leeds, LS16 6QL.
A company registered in England & Wales with company number 04669651. VAT Number GB 816764800.
BTTG™ and Shirley® are trade names of Shirley Technologies Limited
The supply of all goods and services is subject to our standard terms of business, copies of which are available on request.
Our laboratories are accredited to EN ISO/IEC 17025.

Copyright © 2019 Shirley Technologies Limited. All rights reserved



Wira House, West Park Ring Road, Leeds, LS16 6QL, UK.

Telephone: +44 (0) 113 259 1999

Email: info@bttg.co.uk

Website: www.bttg.co.uk

Date: 13 September 2019

Our Ref: 27/05099Supp1/07/19
Your Ref:

Page: 1 of 5

Client: Kalsi Plastics UK Ltd
5 Tomey Road
Tyseley
Birmingham
B11 2NJ

Job Title: Fire Test on One Panel Samples

Client's Order No: —

Date of Receipt: 19 July 2019

Description of Sample(s): One sample of Shower Panels Digitally Printed (1000 x 2400 x 10mm).
Also received a sample of adhesive labelled, Soudel Fix All Crystal Super Clear. This was used to adhere the specimens to the backing board on the test.

Work Requested: We were asked to make the following test(s):

BS 476 Part 7

This is a supplementary report to the one issued on the 29 July 2019 under our classification report reference 27/05099/07/19.

Note: This report relates only to the samples submitted and as described in the report.

- * Subcontracted test, UKAS accredited
- ** Subcontracted test, EN ISO/IEC 17025 accredited
- *** Not UKAS accredit



1066

Shirley® Technologies Limited. Registered Office: Wira House, West Park Ring Road, Leeds, LS16 6QL.
A company registered in England & Wales with company number 04669651. VAT Number GB 816764800.

BTTG™ and Shirley® are trade names of Shirley Technologies Limited
The supply of all goods and services is subject to our standard terms of business, copies of which are available on request.
Our laboratories are accredited to EN ISO/IEC 17025.

Copyright © 2019 Shirley Technologies Limited. All rights reserved



Wira House, West Park Ring Road, Leeds, LS16 6QL, UK.

Telephone: +44 (0) 113 259 1999

Email: info@bttg.co.uk

Website: www.bttg.co.uk

Date: 13 September 2019

Our Ref: 27/05099Supp1/07/19

Your Ref:

Page: 2 of 5

Client: Kalsi Plastics UK Ltd

FIRE TESTS ACCORDING TO BS 476: PART 7:1987 (AS AMENDED) (Method for classification of the surface spread of flame of products)

Date of Test: 29/07/2019

Conditioning

The composite samples were conditioned to constant mass at a temperature of $23\pm 2^{\circ}\text{C}$ and a relative humidity of $50\pm 10\%$ and maintained in this condition until required for testing

Procedure

The test was carried out in accordance with BS 476-7:1987. The sample was supplied by the sponsor of the test. Each specimen was tested adhered to a 12mm thick calcium silicate board with Soudal Fix All High Tack.

The following were recorded:-

- a) The time at which the flame front crosses each vertical reference line;
- b) The maximum extent of flame spread during the first 1.5 min from the start of the test;
- c) The maximum extent of flame spread during the whole test i.e. 10 min or less (if applicable)
- d) The time (and distance) at which maximum flame spread is reached.

The flame spread at 1.5min and the final flame spread results were compared with the standard class limits and a classification was assigned.



1066

Shirley[®] Technologies Limited. Registered Office: Wira House, West Park Ring Road, Leeds, LS16 6QL.
A company registered in England & Wales with company number 04669651. VAT Number GB 816764800.

BTTG[™] and Shirley[®] are trade names of Shirley Technologies Limited.
The supply of all goods and services is subject to our standard terms of business, copies of which are available on request.
Our laboratories are accredited to EN ISO/IEC 17025.

Copyright © 2019 Shirley Technologies Limited. All rights reserved

Client: Kalsi Plastics UK Ltd

Requirements

The class limits for flamespread, detailed in BS 476:Part 7: are set out below.

	Flame spread at 1.5 min (mm)	Final flame spread (mm)
Class 1	165 (+25)	165 (+25)
Class 2	215 (+25)	455 (+45)
Class 3	265 (+25)	710 (+75)
Class 4	Exceeding Class 3 limits.	

A definitive classification is based on a sample of six specimens and the figure in brackets gives the tolerance by which only one specimen in six may exceed the class limit assigned.

Results

The test results relate only to the behaviour of the test specimens of the product under the particular conditions of test; they are not intended to be the sole criterion for assessing the potential fire hazard of the product in use.

Time for flame spread to reach (s) (mm)								Flame spread at 1.5 min (mm)	Maximum flame spread (mm)	Time to reach maximum flame spread (s)
75	165	215	265	455	710	785	825			
--	--	--	--	--	--	--	--	60	60	60
47	89	--	--	--	--	--	--	171	180	182
42	--	--	--	--	--	--	--	75	75	63
--	--	--	--	--	--	--	--	60	60	60
--	--	--	--	--	--	--	--	60	60	67
--	--	--	--	--	--	--	--	60	80	225



Wira House, West Park Ring Road, Leeds, LS16 6QL, UK.
Telephone: +44 (0) 113 259 1999
Email: info@bttg.co.uk
Website: www.bttg.co.uk

Date: 13 September 2019

Our Ref: 27/05099Supp1/07/19
Your Ref:

Page: 4 of 5

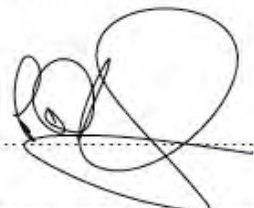
Client: Kalsi Plastics UK Ltd

Classification

The results indicate that the sample met the performance requirements of Class 1.

Uncertainty of measurement has not been taken into account when presenting the test result. The relevant uncertainty value is included as an annex which forms an integral part of the report.

Reported by:  S Rowan, Laboratory Technician

Countersigned by:  P Doherty, Manager

Enquiries concerning this report should be addressed to Customer Services.



1066

Shirley[®] Technologies Limited. Registered Office: Wira House, West Park Ring Road, Leeds, LS16 6QL.
A company registered in England & Wales with company number 04669651. VAT Number GB 816764800.

BTTG[™] and Shirley[®] are trade names of Shirley Technologies Limited
The supply of all goods and services is subject to our standard terms of business, copies of which are available on request.
Our laboratories are accredited to EN ISO/IEC 17025.

Copyright © 2019 Shirley Technologies Limited. All rights reserved



Contact List

For Accounts



accounts@pearlplastics.co.uk



0113 2879089 Option 0

For Sales



sales@pearlplastics.co.uk



0113 2879089 Option 1

For Warehouse/Deliveries



warehouse@pearlplastics.co.uk



0113 2879089 Option 3

For Reception



0113 2879089 Option 2

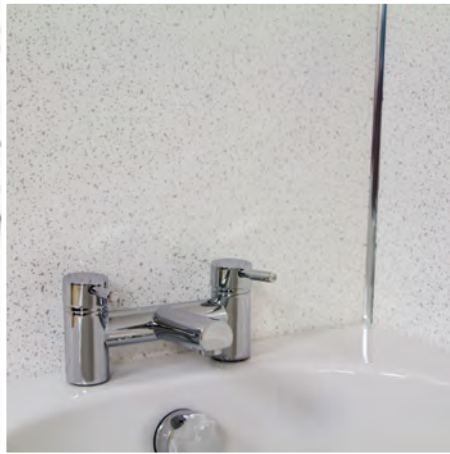
Sales Fax Number



01274 683738

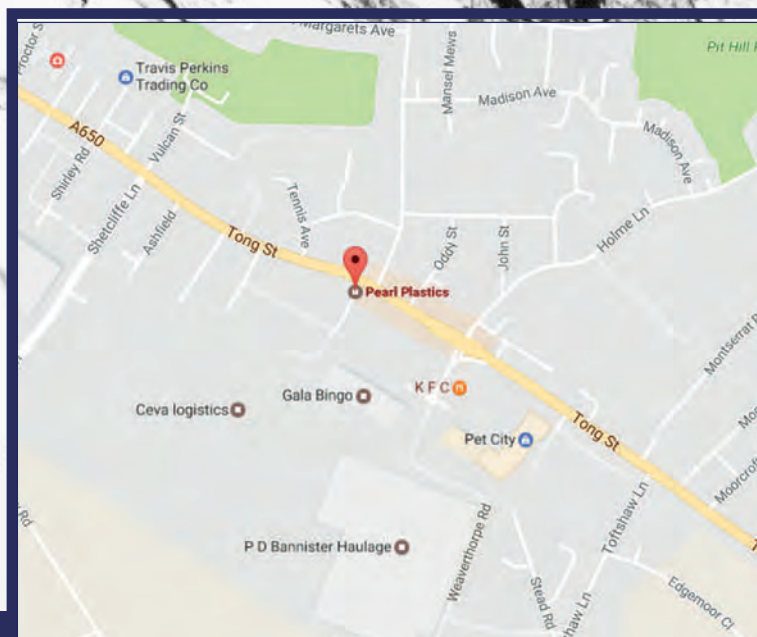


www.pearlplastics.co.uk



Tel: 0113 2879089

Fax: 01274 683738



10 Lister Street, Off Tong Street, Bradford BD4 9RT